



OPERATOR'S MANUAL

Model S60-12020 Push Spreader



Spyker Spreaders

Contact us at 800.972.6130
www.spyker.com

⚠ IMPORTANT

**This manual contains information for the safety of persons and property.
Read it carefully before assembly and operation of the equipment!**

TABLE OF CONTENTS

Safety 2

Part List 3

Part Explosions 4-5

Assembly 6-8

Use and Care

Troubleshooting 8

Dial - General Info 9

Rotary Agitator - Info 9

General Tips for Use 10

Maintenance 10

Dial Setting Chart 11

Seed Spreading Chart 11

Warranty 12

OPERATE SAFELY

Read Before Using:

- Keep bystanders away when you operate this machine.
- Use this machine for intended purpose only.
- Do not let children or an untrained person operate machine.
- Keep all parts in good condition and properly installed. Fix damaged parts immediately. Replace worn or broken parts.
- Do not modify the machine or safety devices. Unauthorized modifications to the machine may impair its function and safety, and void the warranty.
- Do not let anyone sit or ride on equipment during operation.
- Wear substantial footwear and long trousers. Do not operate the equipment when barefoot or wearing open sandals.
- Do not wear loose fitting clothing that can get caught in moving parts.
- Always wear eye protection when operating the equipment.
- Stay alert for holes in the terrain and other hidden hazards.
- Watch out for traffic when crossing or near roadways.
- Before you operate any feature of this machine, observe your surroundings and look for bystanders.
- Always wash hands after contact with fertilizers and pesticides.
- Keep all nuts, bolts and screws tight to be sure the equipment is in safe working condition.

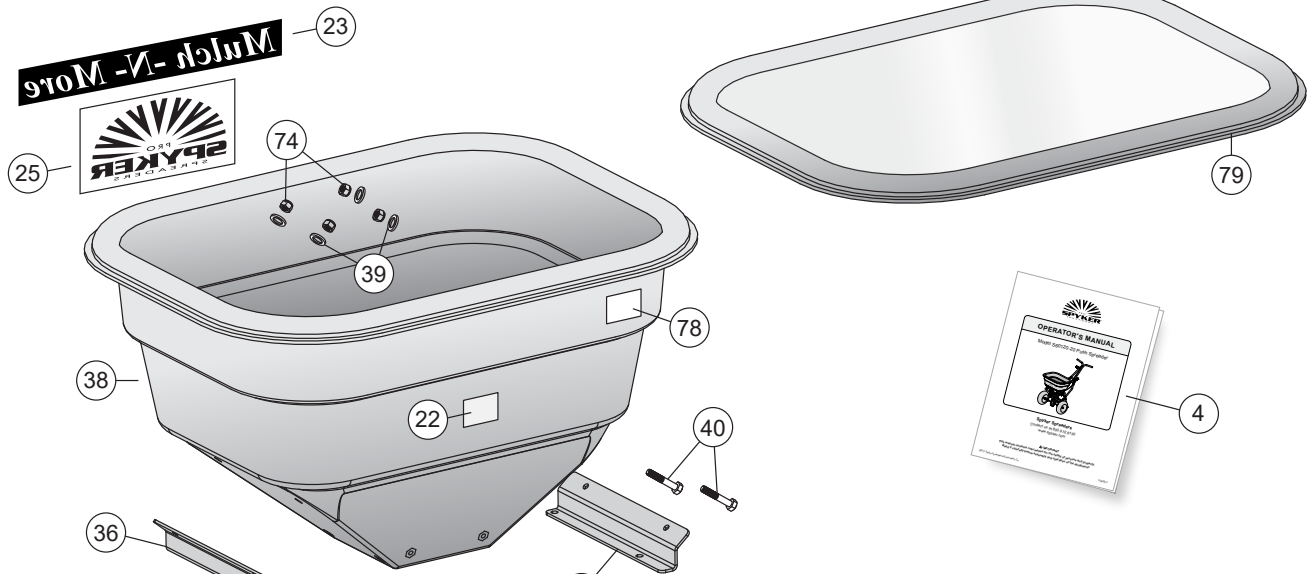
Part List

DO NOT RETURN PRODUCT IF YOU ARE MISSING PARTS. PLEASE CALL: 1 (800) 972-6130

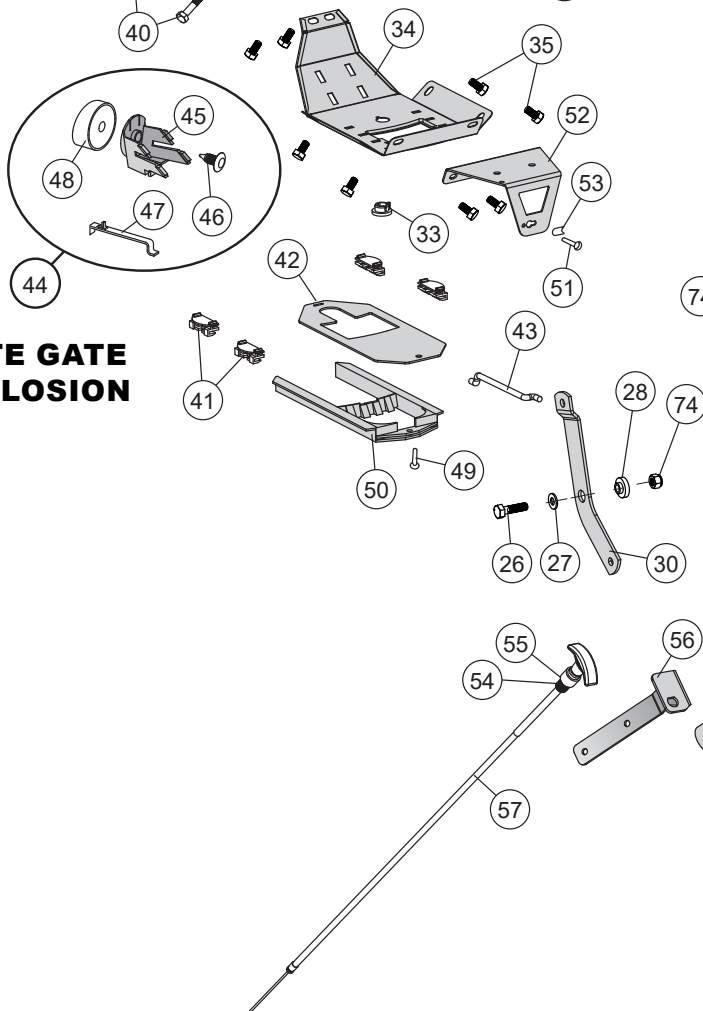
No.	Part #	Qty	Description
1	1008268	1	Shaft, Upper Spinner
2	1001234	2	Stainless Steel Collar
3	1001783	4	Ball Bearing
4	1008290	1	Manual S60-12020
5	1000053	2	Roll Pin 1/8 X 3/4
6	1000198	1	Felt Washer
7	1001301	2	3/8 Spinner Shaft Bushing
8	1001518	1	Pinion Gear - Metal
9	1005382	1	Lower Spinner Shaft, 288
10	2M0828SS	8	Bolt, HexHd 1/4x1-3/4 SS
11	1001303	8	Bolt, FlgHd 10-24x5/8" SS
12	1001308	8	Nut, NylonLock, #10-24 SS
13	1005336	1	Gear Box Cover Front
14	1005337	1	Gear Box Cover Rear
15	1005368	1	Grease Zerk 1/4-28
16	1001299	2	Gearbox Bushing 5/8"
17	1001304	1	Dowel Pin, 3/16 x 1, SS
18	1001516	1	Bevel Gear-metal
19	1005389	1	Nylon Spacer, Pin Retain
20	1008275	1	Axle, Wheel
21	1000000	1	On-off Decal
22	1001386	1	Spyker Accuway Label
23	1001414	1	Decal Mulch-n-more
24	1008267	1	Coupling
25	1008067	1	Decal Spyker Square Blue
26	1001255	2	Screw 1/4-20 X 1"HexHd,SS
27	1001351	7	Washer, 1/4" SS
28	1001533	2	Nylon Flange Bushing
29	1001763	2	Grease Zerk 1/4-28
30	1008246	1	Linkage, Pivot
31	1008273	1	Hopper Suppt Weld Polish
32	1008274	1	Axle Tube Weldm Polish
33	1000203	1	Hopper Bottom Bearing
34	1000766	1	Mulch Bottom, Polished
35	1004880	8	Bolt, HexHd 1/4x1/2 SS
36	1008250LH	1	Brace, Hopper LH
37	1008250RH	1	Brace, Hopper RH
38	1020306	1	Hopper, 120 Drilled
39	1001554	6	Washer, Nylon
40	1006084	4	Bolt, HexHd 1/4x3/4 SS

No.	Part #	Qty	Description
41	1001521	4	Guide, Rate Gate/Accuway
42	1008244	1	Rate Gate
43	1008270	1	Linkage, Round
44	1000734	1	Rate Gate & Dial Assy
45	1000211	1	Dial Mount
46	1000215	1	Pine Tree Clip
47	1000725	1	Rate Gate Link, Polished
48	1000733	1	Dial- Milled
49	1000214	1	Wire Fastener Pan Head
50	1000740	1	Accuway Diffuser
51	1001264	1	Bolt, 10-32 x 1/2", SS
52	1005344	1	Cable Mount Bracket
53	1005383	1	Cable Retainer
54	1001320	1	Hex Nut, M14 x1.5
55	1001358	1	Washer/internal Tooth
56	1008245	1	Bracket, Cable
57	1008277	1	Cable Diffuser
58	1008720	1	Screen 13-1/8 x 18-7/8
59	1001607	2	Wheel, 12" Drive/Idle
60	1007773	1	Lever, Control
61	1007828	2	Knob, Handle
62	1008069	1	Dual Handle Weld Polished
63	1008269	1	Rod, Control
64	1000198	1	Felt Washer
65	1000223	1	Agitator Wire
66	1000607	1	Spinner - Drilled (black)
67	1001237	2	Bolt, 1/4-20 X 2-3/4"
68	1001262	5	Bolt, HexHd 1/4x1-1/2 SS
69	1001274	1	Clevis Pin, 3/16x1-3/4
70	1001350	5	Washer, Flat SS
71	1001506	2	Handle Grips, .930id X
72	1001681	1	Spinner Clip SS
73	1005189	1	Agitator Wire
74	1005198	21	Nut, NylonLock 1/4-20, SS
75	1019596	1	Cotter Ring
76	1005414	1	Rue Ring Locking Pin
77	1007794	2	Brace, Cross
78	1020283	1	Decal; QR Code, Calibration
79	1006262	1	Hopper Cover

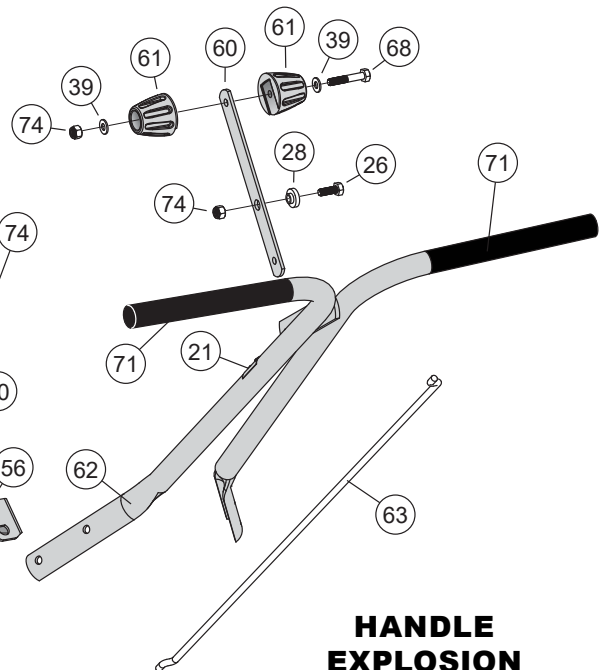
HOPPER EXPLOSION



RATE GATE EXPLOSION



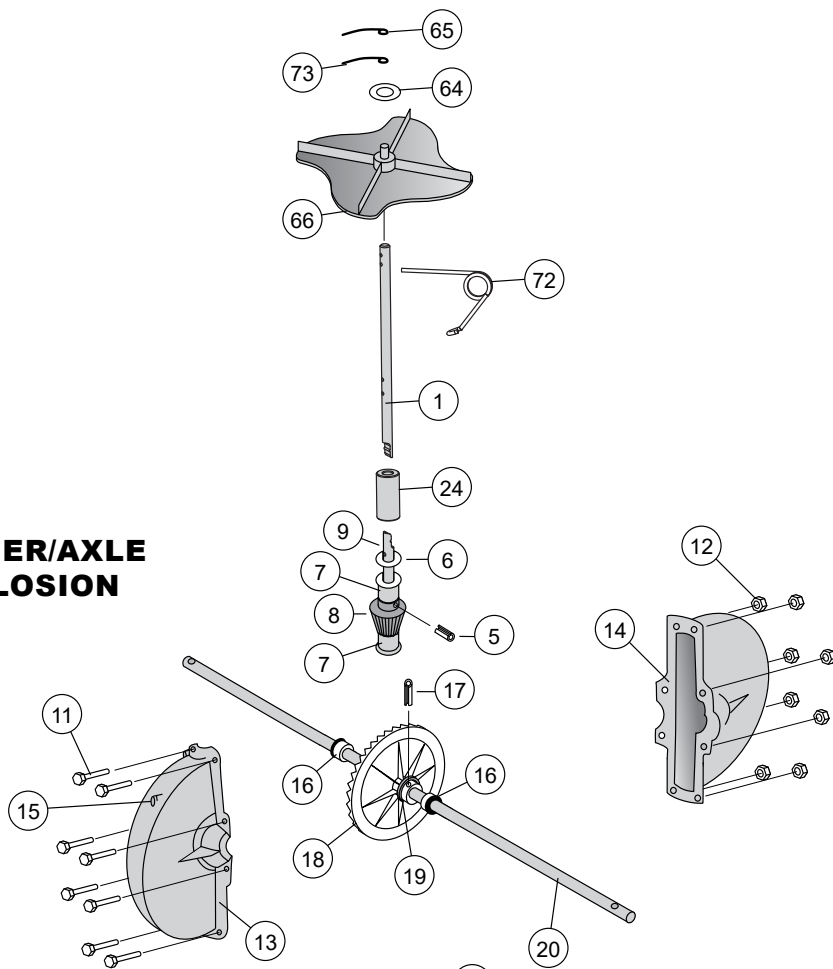
HANDLE EXPLOSION



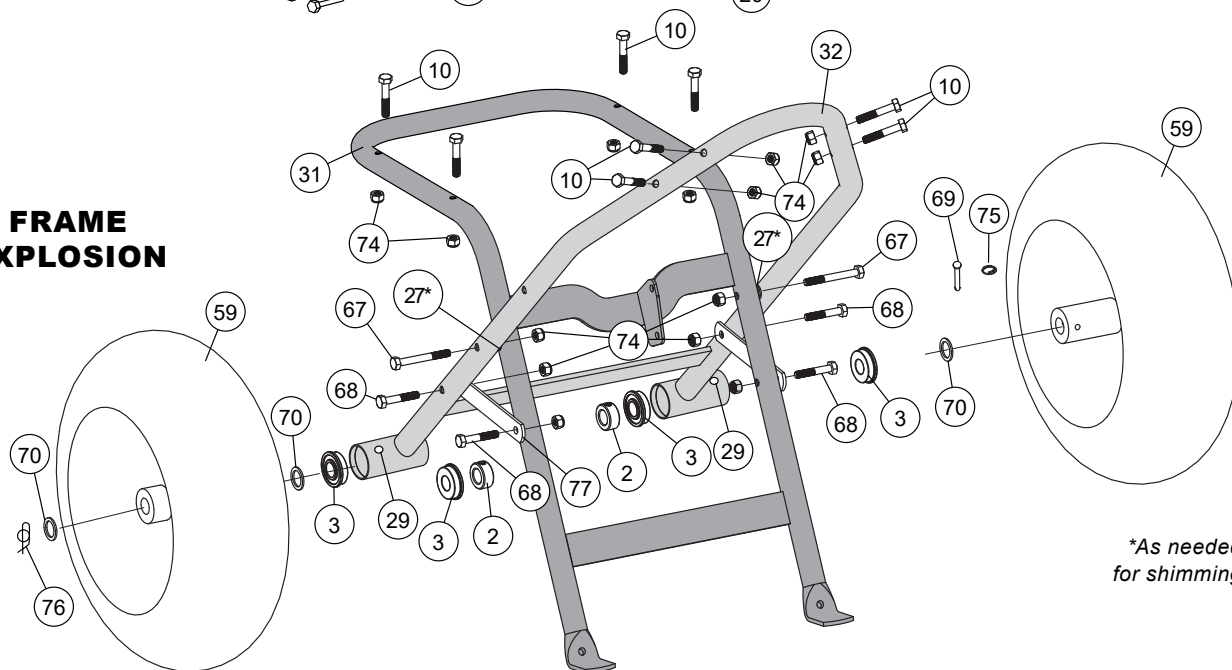
Part Explosions

DO NOT RETURN PRODUCT IF YOU ARE MISSING PARTS. PLEASE CALL: 1 (800) 972-6130

SPINNER/AXLE EXPLOSION



FRAME EXPLOSION

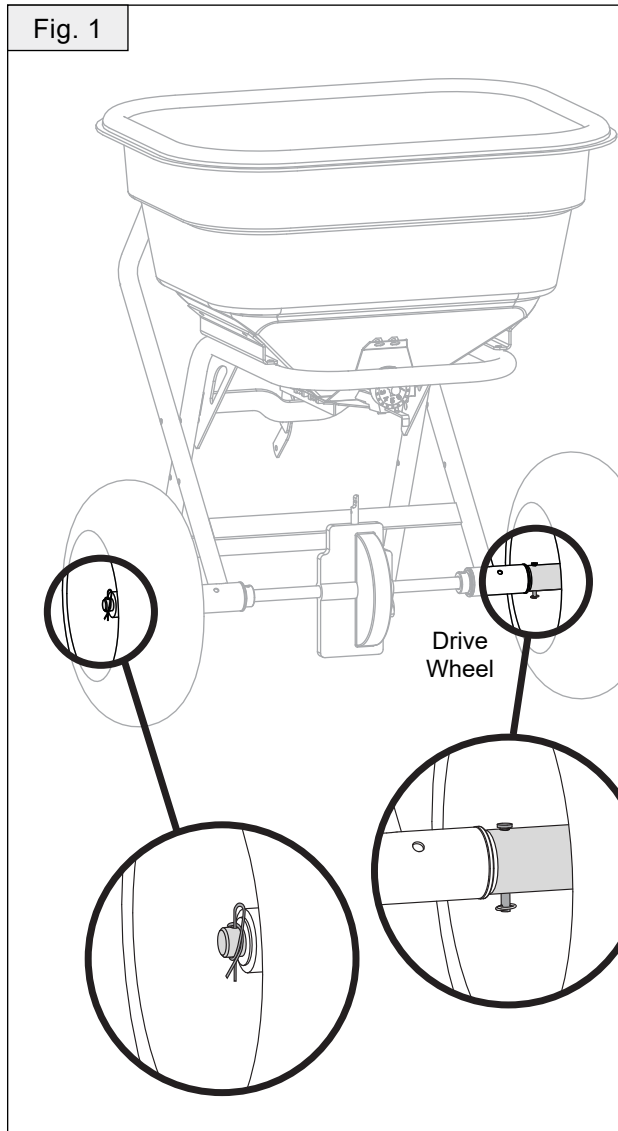


*As needed
for shimming

Assembly

- 1a. Remove clips from axles on the outside of axle frame assembly.

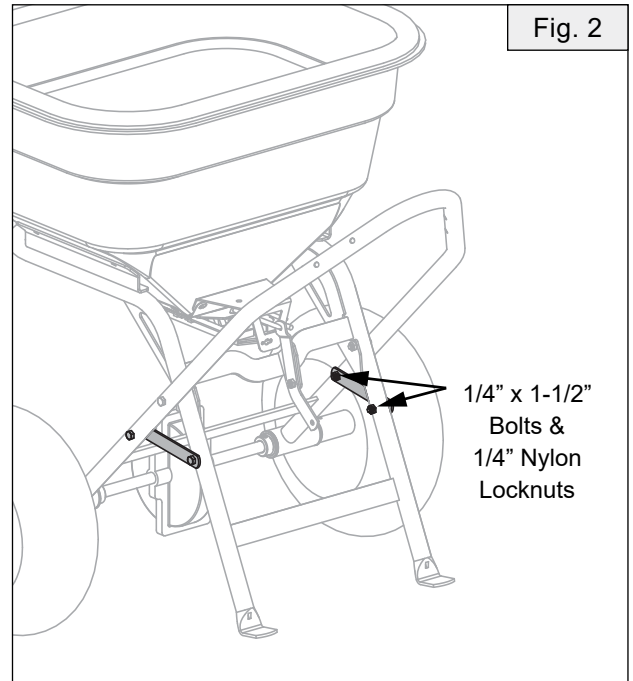
Install wheel washer on each end of axle.



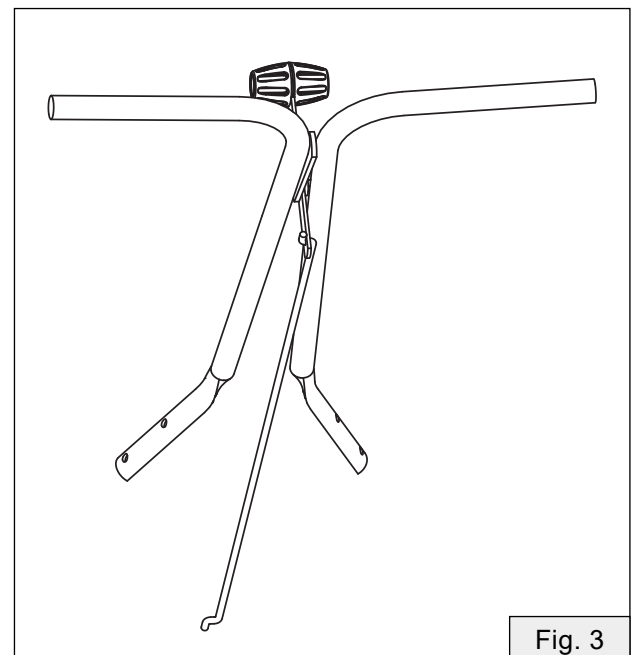
- 1b. Install Wheel on each side of axle (Valve Stem Out). On the drive wheel side, install $\frac{3}{16}$ x $1\frac{3}{4}$ " Clevis Pin and Cotter Ring, Figure 1. On opposite side install wheel washer and Rue Ring Locking Pin on outside of wheel.

NOTE: Extra wheel washers are provided and are to be used for shimming as needed. Wheels need to set snug against frame.

2. Install the Cross Braces to frame as shown, Figure 2. Install using four $\frac{1}{4}$ " x $1\frac{1}{2}$ " Bolts and Locknuts.



3. Install linkage to lever, Figure 3.



Assembly

4. Turn handle/linkage assembly sideways and insert end of linkage into rate gate linkage, Figure 4.

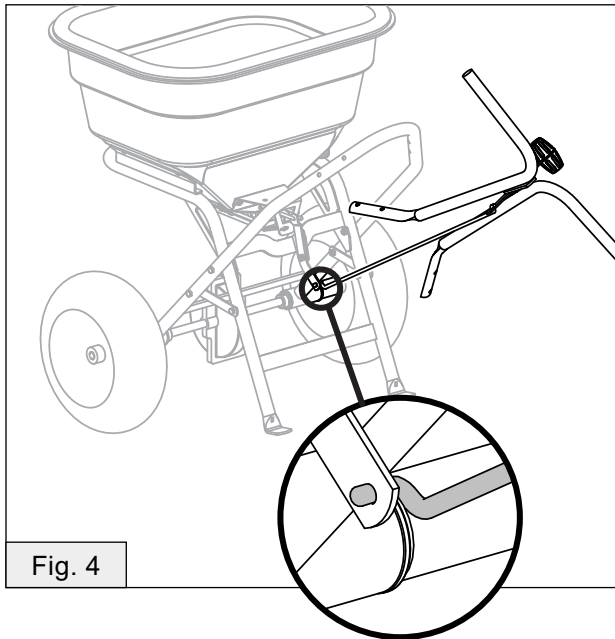


Fig. 4

5. Install handle to frame as shown using 1/4" x 1-3/4" Bolts and Locknuts. **NOTE:** You'll need to orient and install the cable bracket as shown on the left side of the spreader, Figure 5.

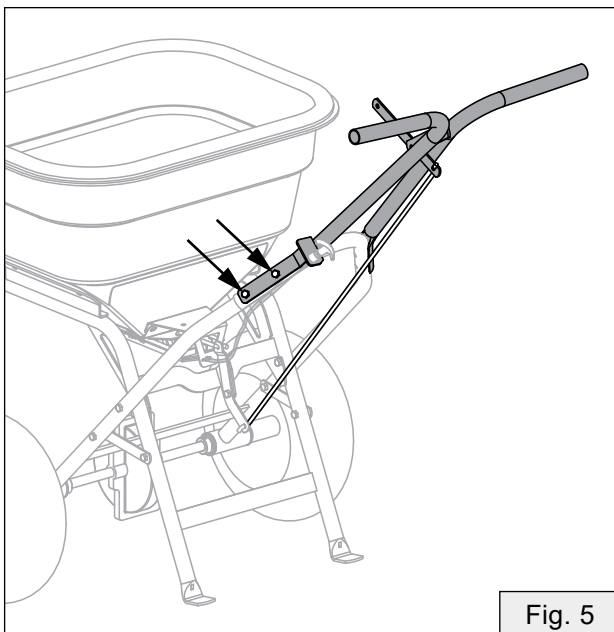
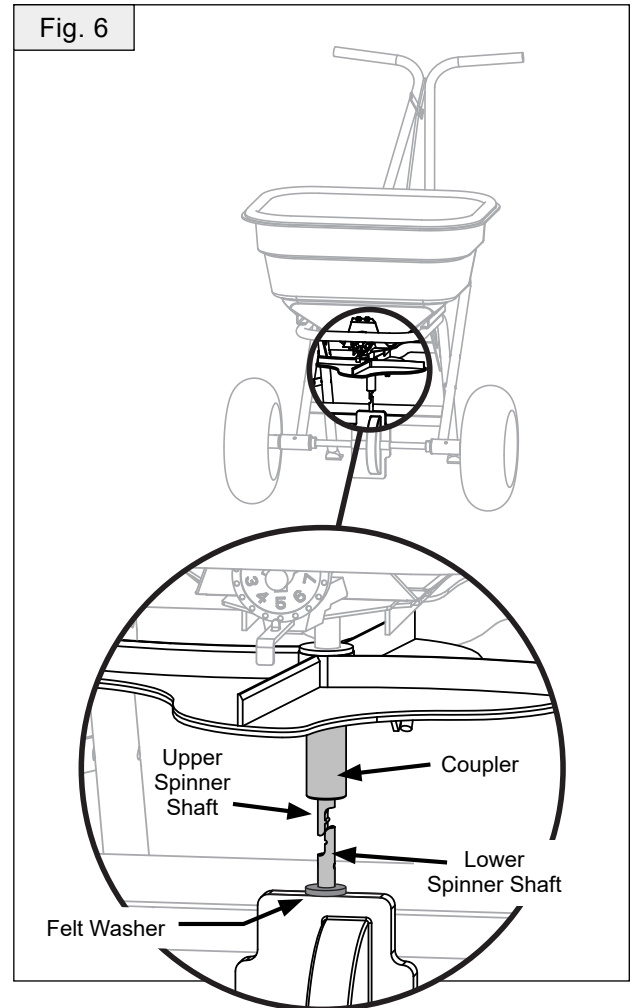


Fig. 5

- 6a. Install two agitator wires on the upper spinner shaft. The larger agitator goes on the top/end of the shaft. **Note orientation of the agitator on page 9.**



- 6b. Install felt washer on shaft below the agitator wires. Slide shaft down through hopper. Install the fan and coupler, see Figure 6.

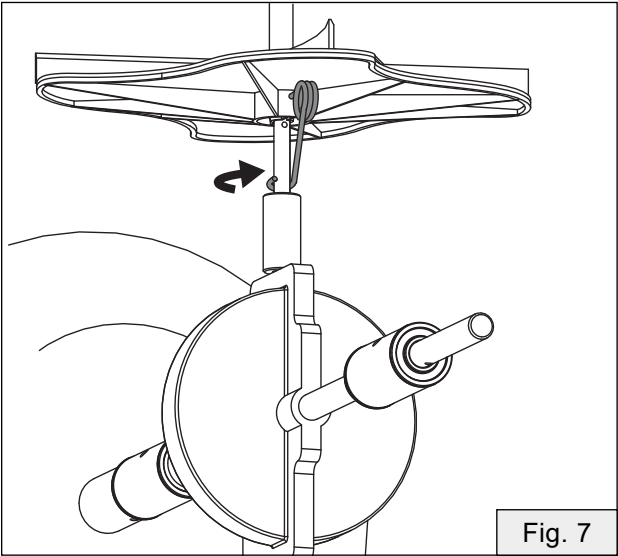
Assemble so upper and lower spinner shafts interlock grooves. Slide coupler down over shafts.

NOTE: Ensure the factory installed felt washer is on the lower spinner shaft, Figure 6.

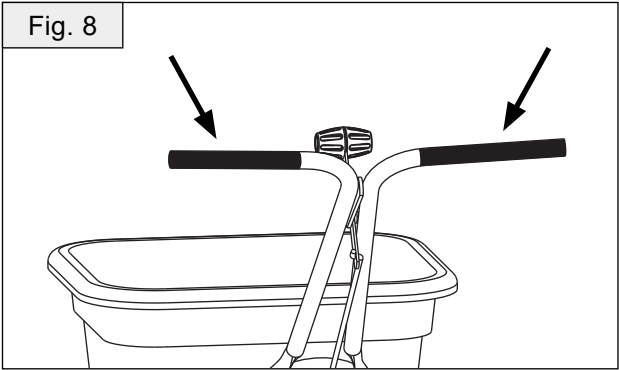
Assembly continues on page 8.

7. Slide coupler all the way down onto the felt washer on the lower spinner shaft, Figure 7.

Insert spinner spring through the fan and upper hole on the spinner shaft. Wrap spring around shaft and clip into place as shown below.



8. Install handle grips.



Assembly is complete.

TROUBLESHOOTING

Problem	Possible Cause	Solution
Spreader Does Not Sit Flat	The "feet" or the flattened portion of the spreader hopper support tubes are not bent equally.	Using a hammer or pliers, bend the feet to be equal with each other.
Deflector Shut-Off is Binding and Will Not Open / Close Properly	Shut-off plate is jammed with debris.	Thoroughly wash out hopper and shut-off plates with water. Ensure debris is not stuck between shut-off plate and rate gate plate.

A digital calibration calculator is available online.

To access, scan this QR code with your smart phone or visit:
www.spyker.com/spyker-spreaders-calibration



Use and Care

⚠ READ BEFORE USING

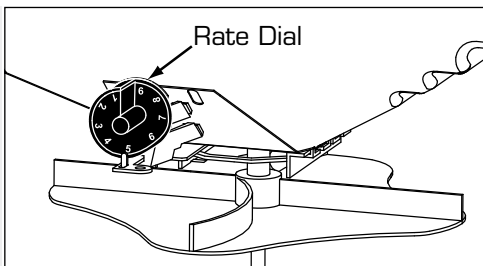
Become familiar with the operation of the spreader BEFORE you put material in the hopper.

- Practice walking with the spreader, opening and closing the rate gate at the appropriate times.
- Travel at a constant speed and operate the spreader lever position. *Remember: Open the rate gate after the spreader is in motion at operating speed (about 3 mph, or at a brisk walking pace).*
- Close the rate gate while spreader is still at operational speed.

DIAL SETTING INFORMATION

The RATE DIAL has 9 numbers with 10 stops between each number. This allows for accurate control of the spreading rate. The dial is set with only a turn, it will automatically lock into the set position.

Line up the dial number with the dial indicator.



- The spread width ranges from 4 - 12 ft. wide depending on the volume/density, particle size of the material, and rate of travel.
- The spread thins or feathers at the outer edges, eliminating sharp, "Edge Of Spread" lines which cause stripes and streaks. Extra coverage can be given under trees and other heavy feeding areas without showing "Edge Of Spread" lines.
- Gaps and double overlaps are less likely. Small errors in travel are forgiven and do not show.

WARNING: When spreading products containing herbicides, exercise extreme caution with respect to careless spreading and to wind-drift.

CONTACT OF SOME PRODUCTS ON SOME PLANTS CAN BE FATAL

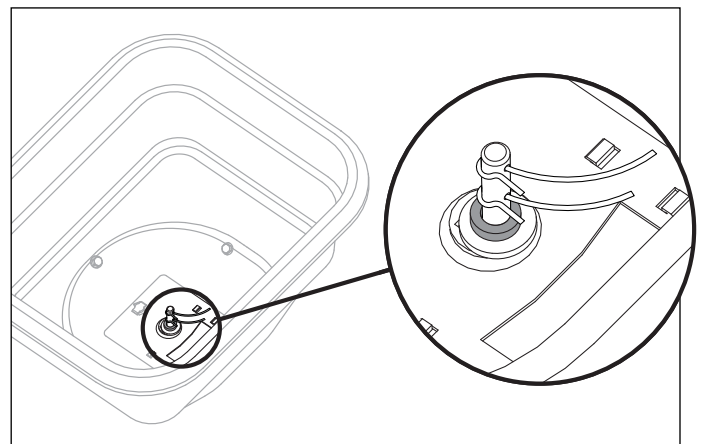
If a dial setting is not found, use the size and weight comparison table found in this manual. Determine a dial setting on the low side. If the setting proves to be too low, cover the area more than one time. A higher setting can be used when a proven dial setting is established.

Remember: Published dial settings are approximate only. The operation of the spreader, the condition of the material (damp or dry or over-pulverized) and weather conditions, are all contributing factors. For these reasons, it is often a good idea to spread the area 2 times - or one-half rate - in cross directions (SEE INFORMATION ON ONE-HALF RATE DIAL SETTINGS). One-half rate dial settings are highly recommended under damp and humid conditions.

ROTARY AGITATOR

Use the rotary agitator only if needed. Free-flowing, lump-free materials will not require the agitator.

THE ROTARY AGITATOR IS EASILY INSTALLED OR REMOVED. Note the clockwise rotation and sweep. Place felt washer around spinner shaft before inserting agitator.



Use and Care

READ BEFORE USING

NOW YOU ARE READY TO PUT MATERIAL IN THE HOPPER

WARNING: AVOID INJURY! Chemicals can be dangerous. Use caution to prevent injury for operators or bystanders.

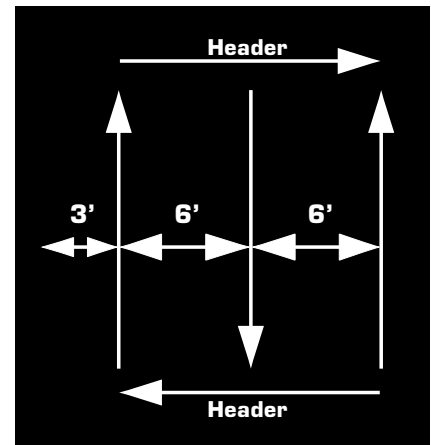
- Make sure the rate gate is in the closed position.
- Read chemical container label for handling instructions. A Material Safety Data Sheet (MSDS) should be supplied by the chemical dealer and provides proper safety information.
- Wear proper clothing and safety equipment while handling or applying chemicals.
- Prohibit all smoking, drinking & eating around chemicals.
- When spreading any products containing herbicides, exercise extreme caution with respect to careless spreading and to wind-drift. Contact of some products on some plants can be fatal.
- Fill the spreader on a flat, level surface only. Fill on sidewalk, driveway, cardboard, etc. to avoid material loss.
- When filling hopper with material, always use screen to help break up clumps.

NOW YOU ARE READY TO SPREAD

- Keep spinner blade clean. Excess material build-up can cause an uneven spread pattern.
- Keep the impeller level when spreading.
- DO NOT overload. Maximum capacity is 120 lbs.
- DO NOT use on windy days.
- Spread header strips at the ends of the area OPPOSITE of the direction of spreading. This will provide a "turn-around" area, an area to re-align the spreader for the return spread.
- Example shown is for 6 ft. wide spread. Make the first spread pass at one-half the spread width from the edge of the spreading area or in this case, approximately 3 feet (or one big step).
- Additional spreading passes will be at the full spread width or approximately 6 ft. apart.
- TAKE A SIGHTING AT THE FAR END. Keep your eye on the sighting as you spread. You will not need to wonder where you are or where you have been. Continue until spreading is completed.

- Leftover fertilizer can be spread under trees and other high feeding areas without showing "edge of spread" lines.

Tip: When not spreading, and if pushing the spreader some distance, tip the spreader so only the idle wheel is on the ground.



CLEANING THE SPREADER IS PART OF THE SPREADING JOB

Clean and oil spreader immediately after each use.

Method #1 - Wipe spreader thoroughly with an oily cloth. Oil all bearings and bearing areas.

Method #2 - Wash, rinse, and dry the spreader. Note: Drying takes time. Moisture trapped in bearing areas is slow to go. Immediately after drying - oil all bearings and moving parts. Make certain all operations are thorough.

NOTE: GOOD "DRY CLEANING" IS PREFERABLE TO POOR "WET CLEANING".

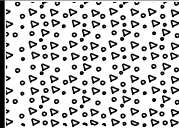
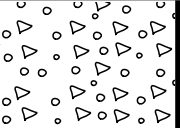

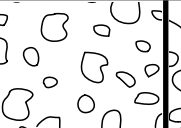

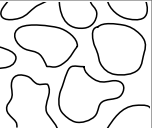

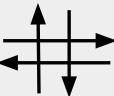
- It is virtually impossible to have rust and corrosion on a clean, dry, oiled surface.
- Again - just before using - oil all bearings and moving parts.
- In storage, ideally the spreader should be hung by the handle. In any case, do not pile weight on the spreader, as excess weight over a period of time can distort the tires.


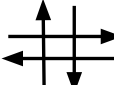
OIL BEARINGS AND ALL MOVING PARTS

Make sure the spreader is running freely!

Settings

NOTE:
Dial Settings
Are Approximate
Only!

	FINE PELLETS			MIXED FINE PELLETS			SMALL PELLETS			MEDIUM NITROGEN PELLETS			MEDIUM PELLETS & GRANULES			LARGE HEAVY PELLETS		
Particle Size																		
Pounds / Square Foot	1	2	3	2	4	6	2	4	6	1	2	3	2	4	6	2	4	6
Dial Setting Full Rate, Once Over 	3.6	4.0	4.2	3.7	4.7	5.2	3	4.2	4.5	3.5	4.2	4.7	3.5	4.2	5.2	3.8	4.9	5.9
Dial Setting Half Rate, Twice Over 	3.1	3.5	3.7	3.2	4.1	4.5	2.2	3.7	4	3	3.7	4	3	3.8	4.5	3.3	4.1	4.9

		Product	Bag Weight	Sq. Ft. Coverage	Dial Setting Full Rate 	Dial Setting Half Rate 	Spread Width
GRASS SEED SPREADING CHART	Blue Grass or Red Top		.5 lbs.	1,000	1.25		4
			1 lbs.	1,000	2.0		4
			2 lbs.	1,000	2.5		4
	Park, Merion, Delta, or Kentucky Bluegrass		.5 lbs.	1,000	2.5		4
			1 lbs.	1,000	3.0		4
			2 lbs.	1,000	3.5		4
	Hulled Bermuda		2 lbs.	1,000	2.75	2.25	6
			3 lbs.	1,000	3.0	2.5	6
			4 lbs.	1,000	3.25	2.75	6
	Mixtures Including Coarse Seeds		2 lbs.	1,000	6.0		6
			4 lbs.	1,000	7.0		6
			6 lbs.	1,000	7.0		6
	Rye Grasses or Tall Fescue		2 lbs.	1,000	6.0		6
			4 lbs.	1,000	7.0		6
			6 lbs.	1,000	7.75		6
	Dichondra		4 oz.	1,000	1.9		8
			8 oz.	1,000	2.1		8
			12 oz.	1,000	2.5		8
	Pensacola Bahia		4 lbs.	1,000	4.5	3.75	7
			5 lbs.	1,000	4.75	4.0	7
			6 lbs.	1,000	5.0	4.25	7



A digital calibration calculator is available online.

To access, scan this QR code with your smart phone
or visit: www.spyker.com/spyker-spreaders-calibration



WARRANTY

1 YEAR LIMITED WARRANTY

This is warranted to the original purchaser only. Spyker will replace parts with defects in materials and workmanship, for a period of one year from the date of purchase.

For Spyker Spreaders, a Brinly-Hardy Company, products employing metal gear systems, pinion and bevel, these metal gears, only, not inclusive of any other parts or materials, are warranted for the life of the spreader, not to be used for replacement or repair past original purchase.

Spyker Spreaders will not be liable for any loss, damage or expense including, but not limited to, consequential or incidental damages, arising from the operation, condition or use of the item. The sole and exclusive remedy against Spyker Spreaders being the replacement of the defective parts. This warranty gives you specific legal rights, and you may also have other rights which vary from state to state.

This express warranty, which is applicable only to the original purchase, is in lieu of and excludes all other warranties, whether expressed or implied by operation of law or otherwise, including any warranty of merchantability or fitness for particular purpose.

SPYKER SPREADERS

Jeffersonville, IN 47130 USA

Phone: 800.972.6130

www.spyker.com